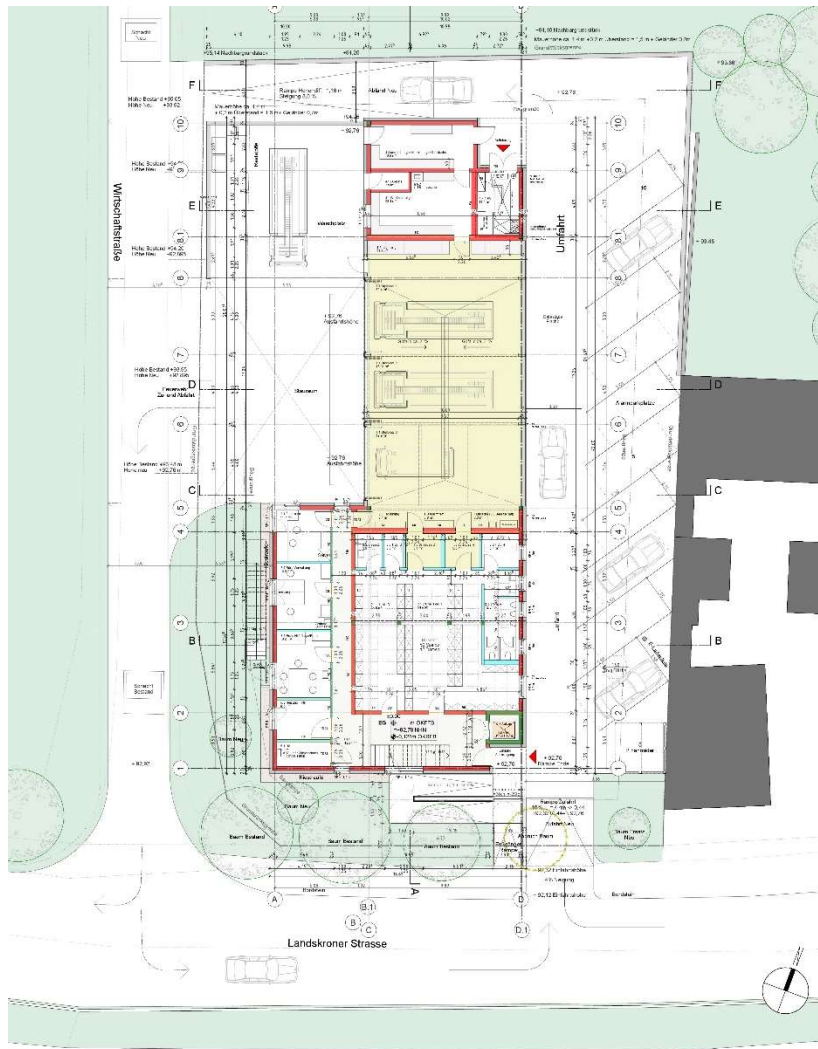


1.Lageplan

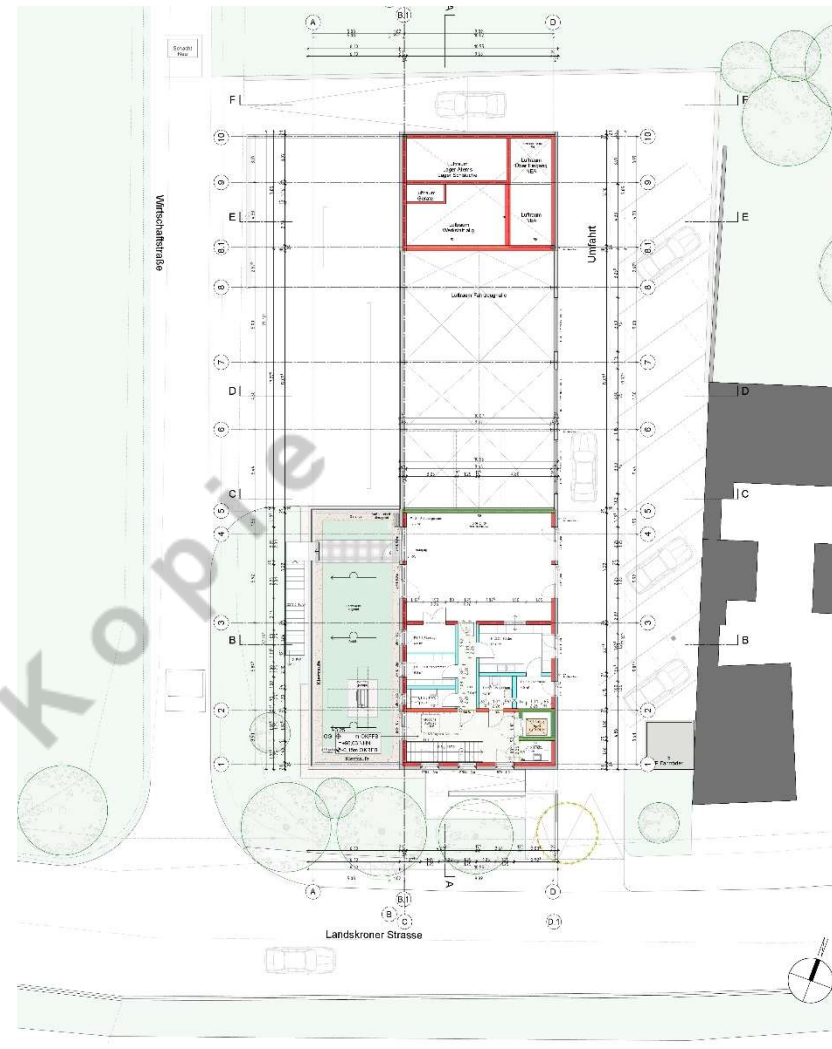


Luftbild/Lageplan mit Neubau (o.M.:.)

2.Grundrisse

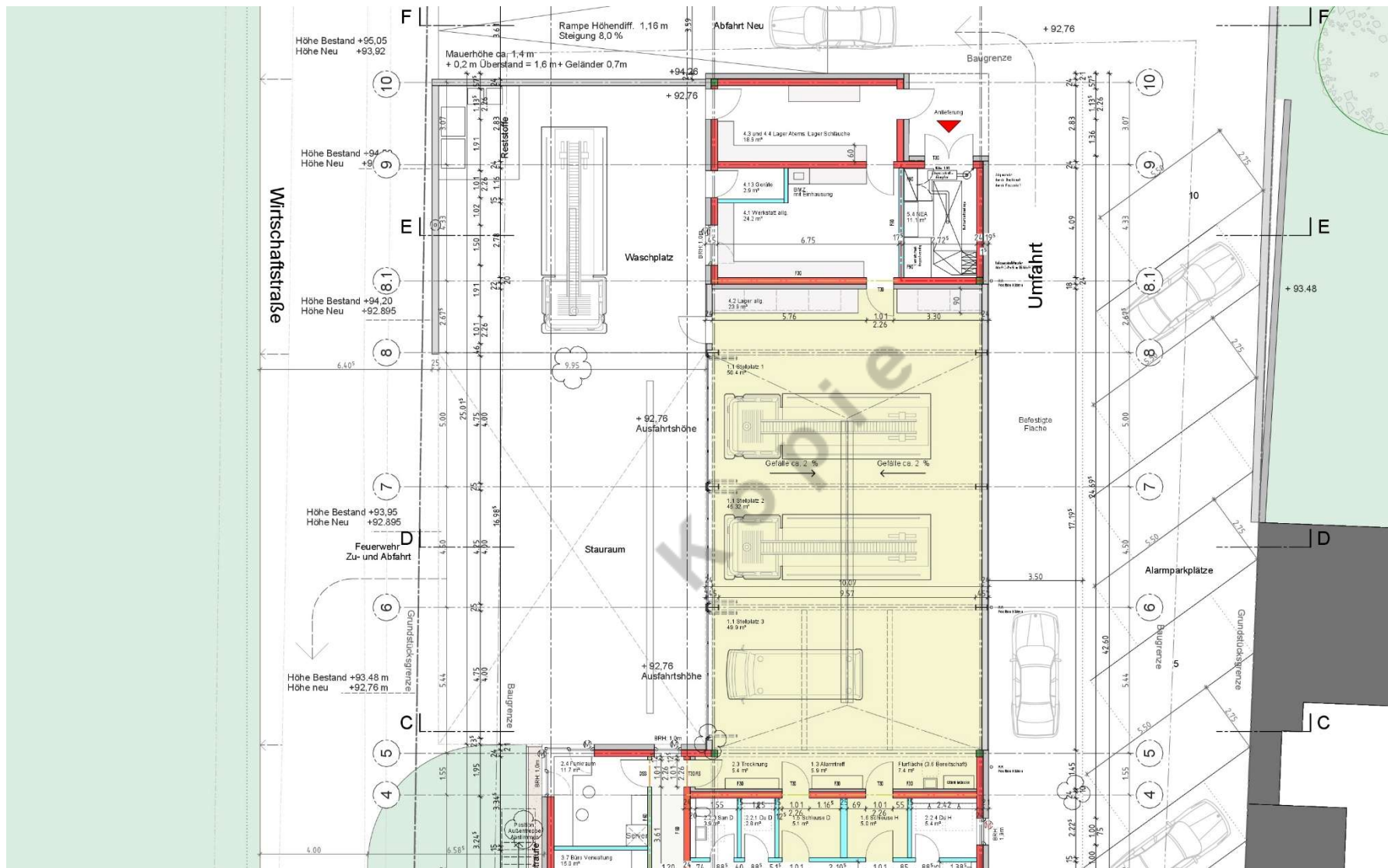


Grundriss EG (o.M.)

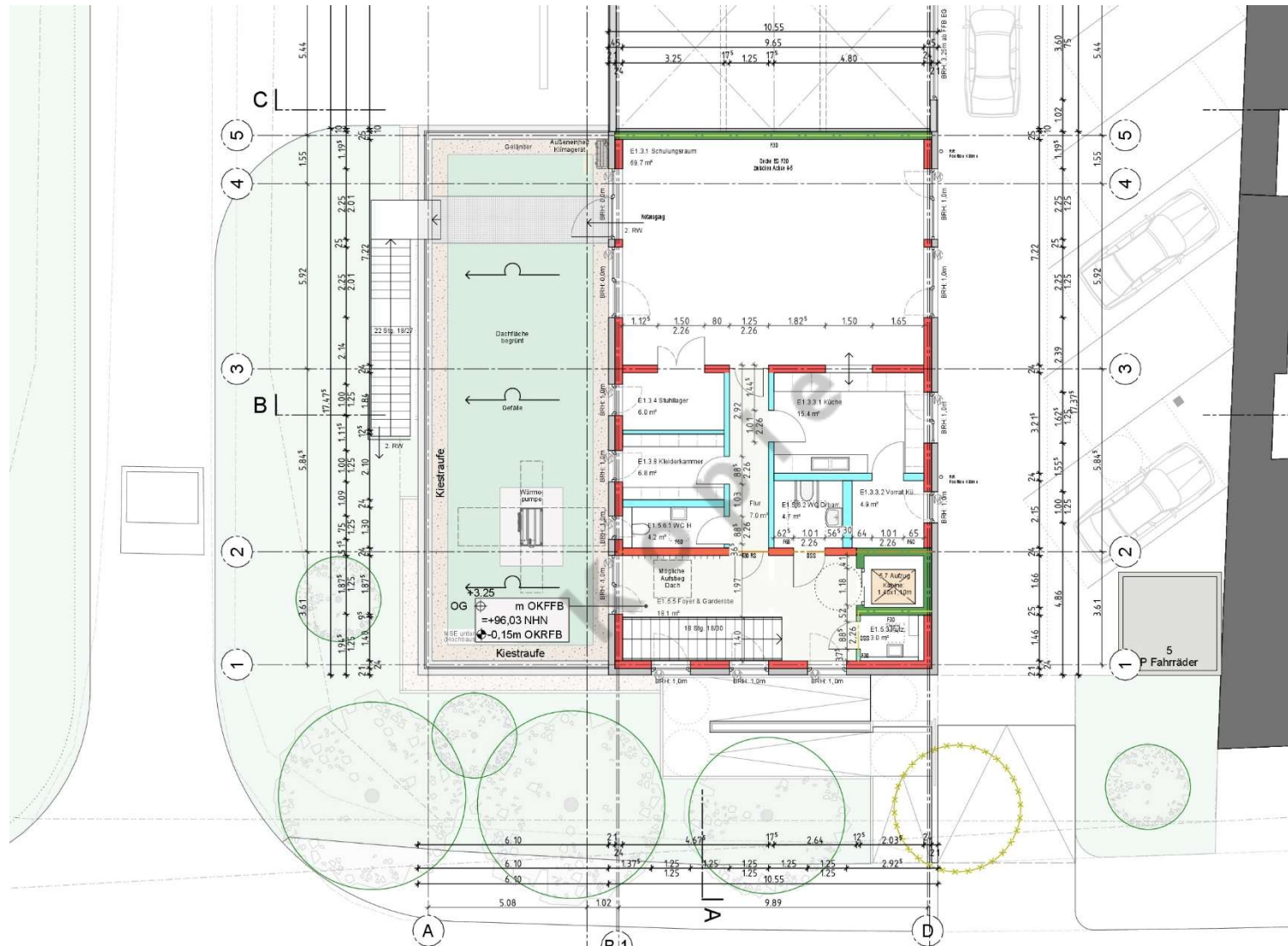


Grundriss 1.OG (o.M.)

Grundriss EG Fahrzeughalle (o.M.)

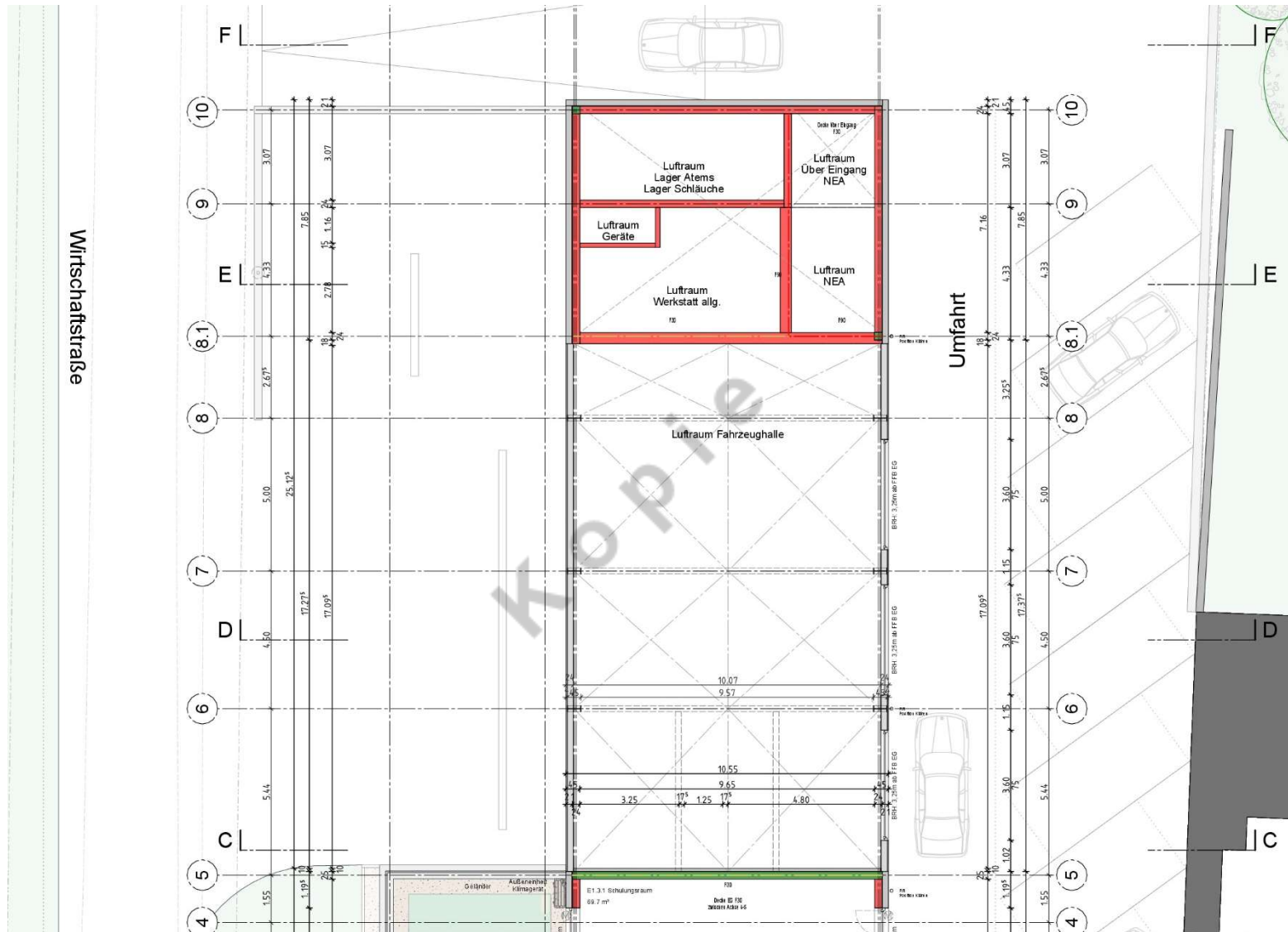


2.Grundrisse



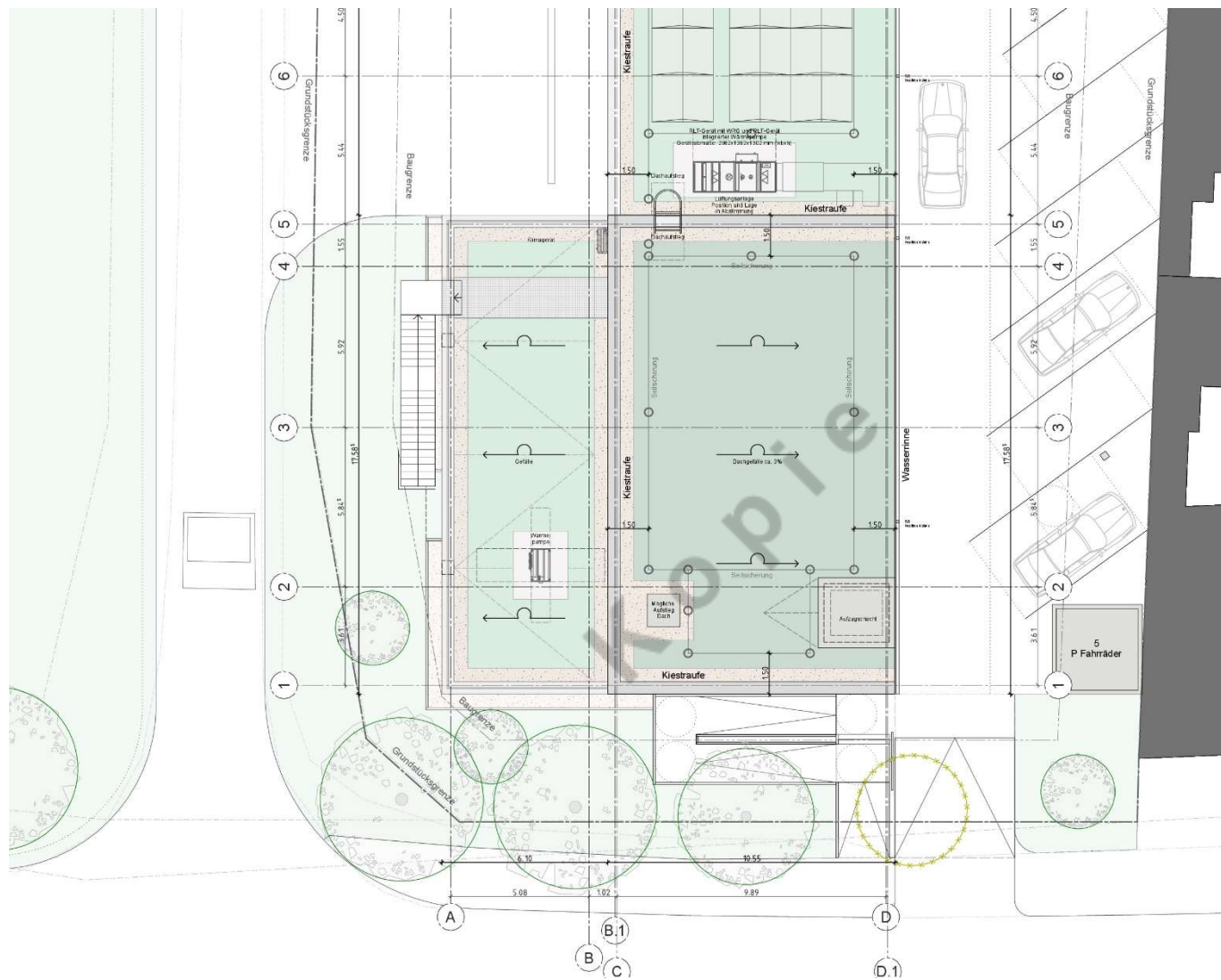
Grundriss 1.OG Sozialtrakt (o.M.)

2.Grundrisse



Grundriss 1.OG Luftraum Fahrzeughalle (o.M.)

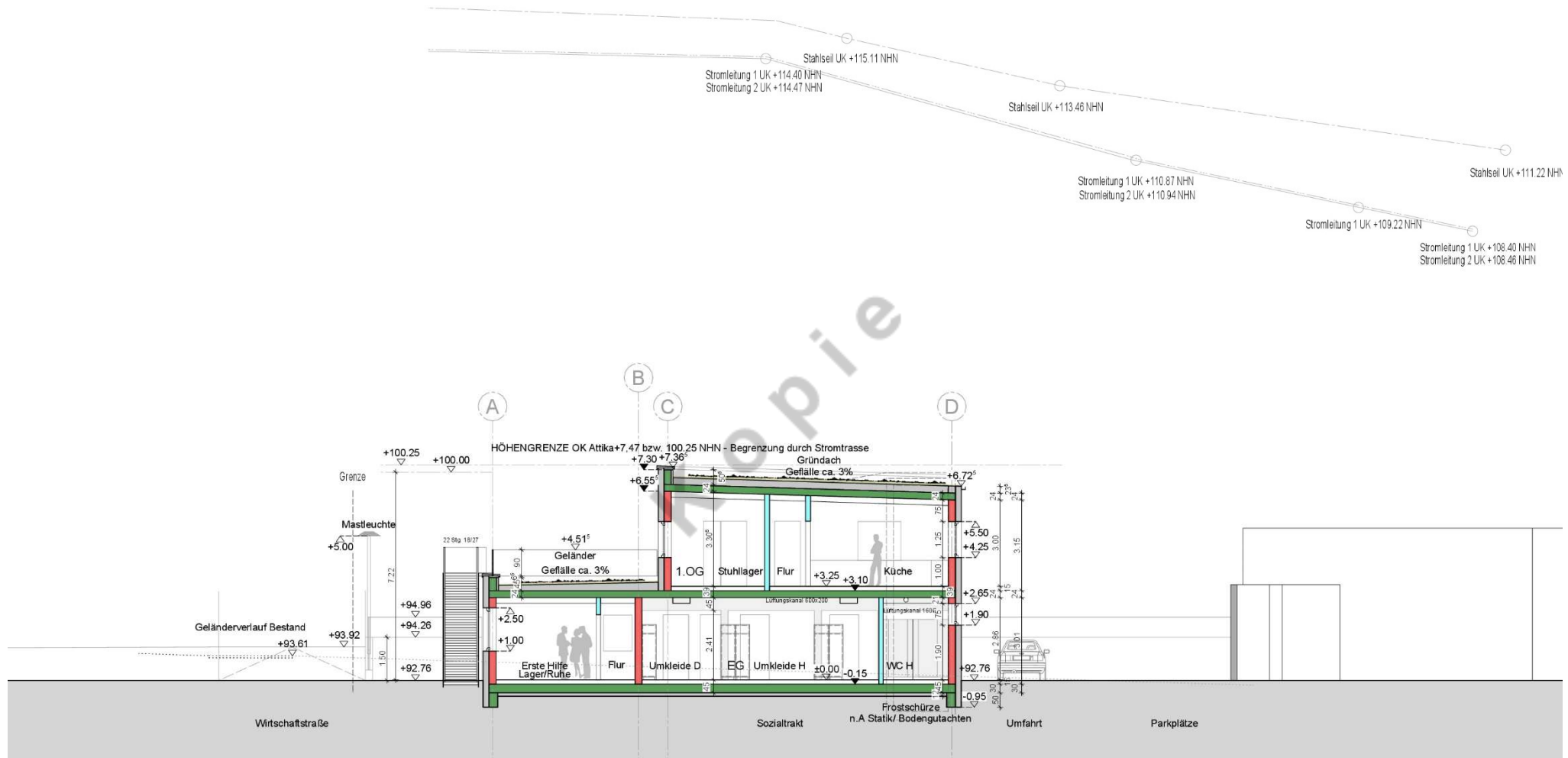
2.Grundrisse



Grundriss Dachaufsicht Sozialtrakt (o.M.)

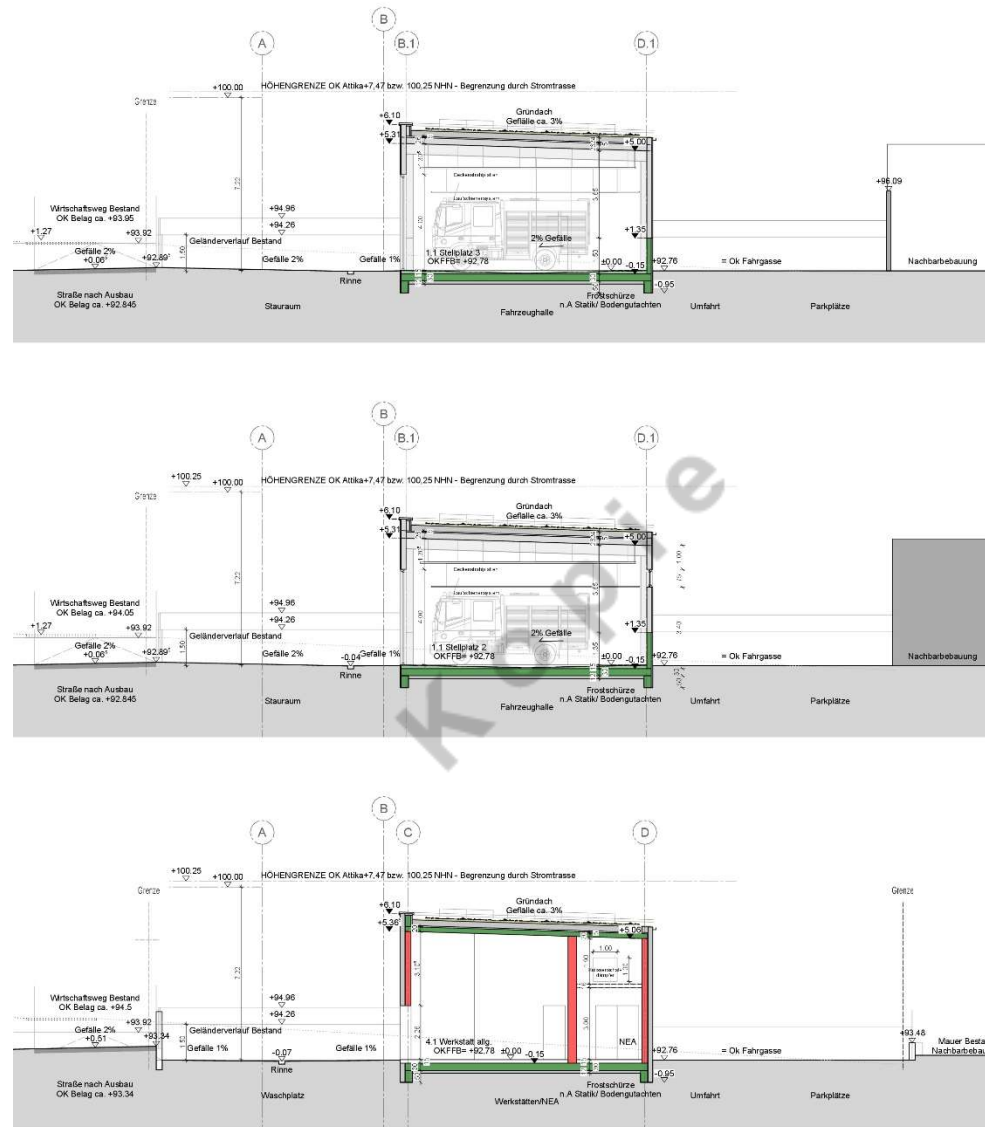
Feigenbutz Architekten PartG mbB, Karlsruhe

3. Schnitte



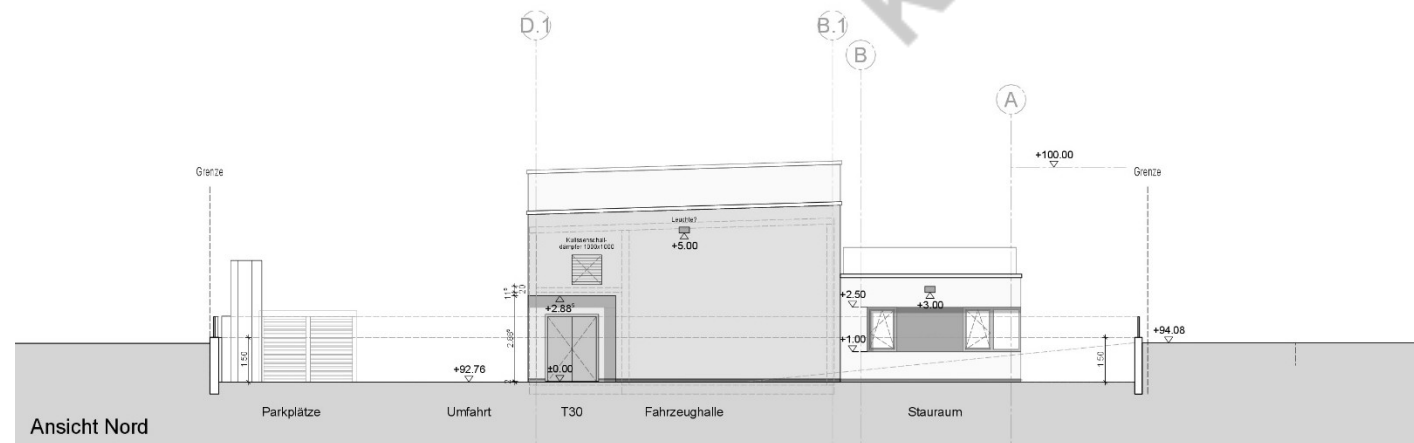
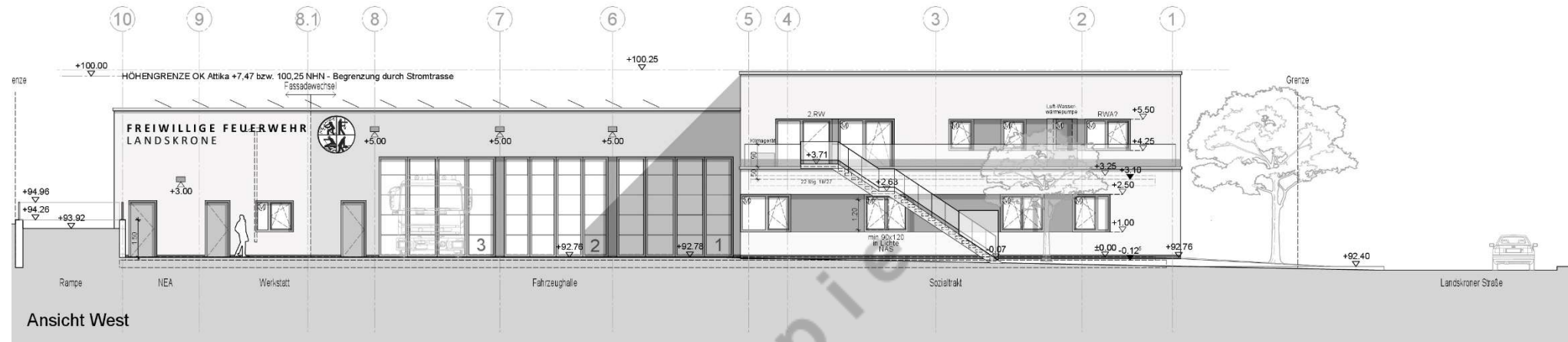
Schnitt B-B (o.M.)

3. Schnitte

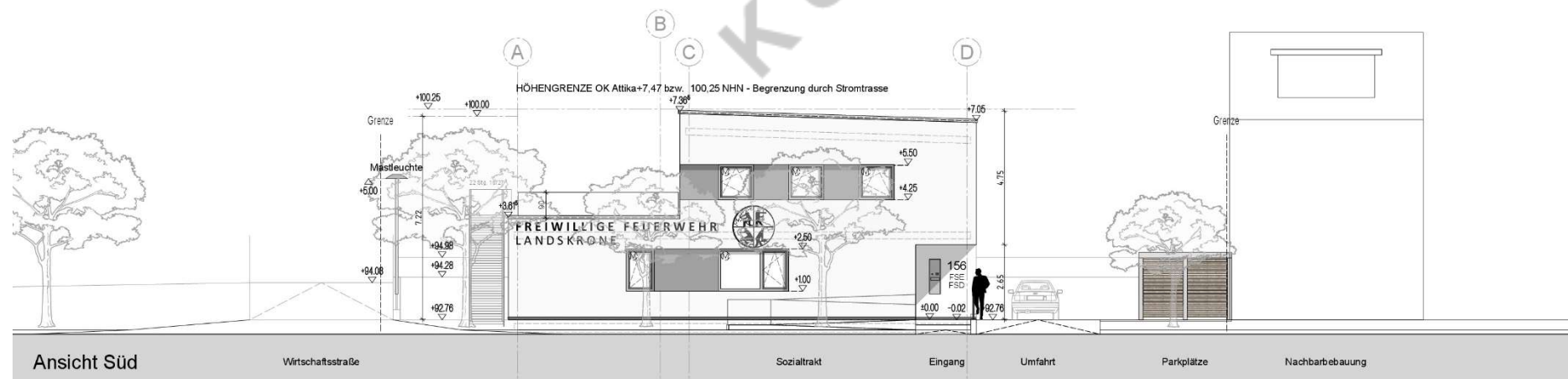
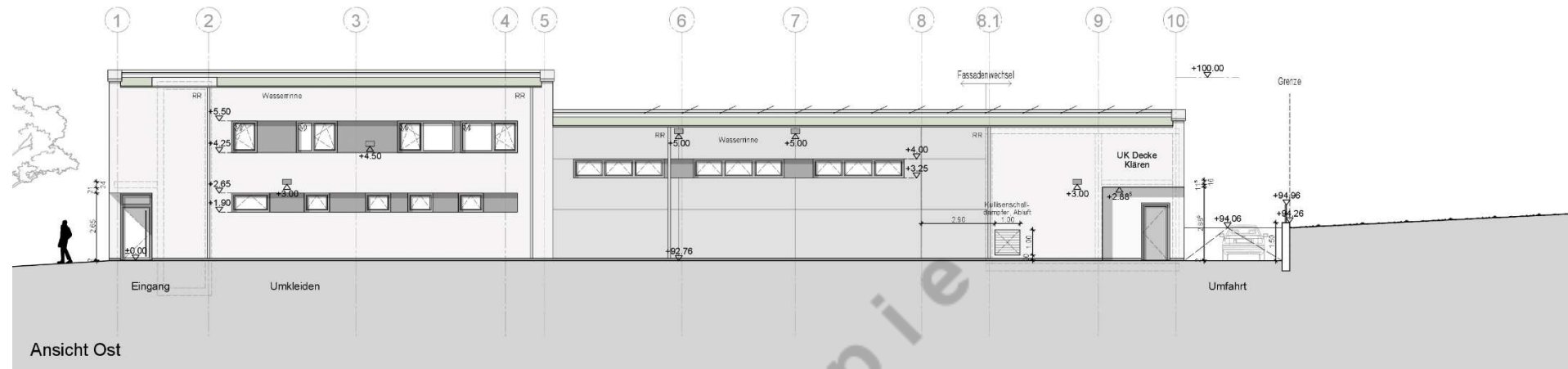


Schnitt C-C, D-D, E-E (o.M.)

4. Ansichten



4. Ansichten



5. Visualisierungen



Perspektive von Westen

5. Visualisierungen



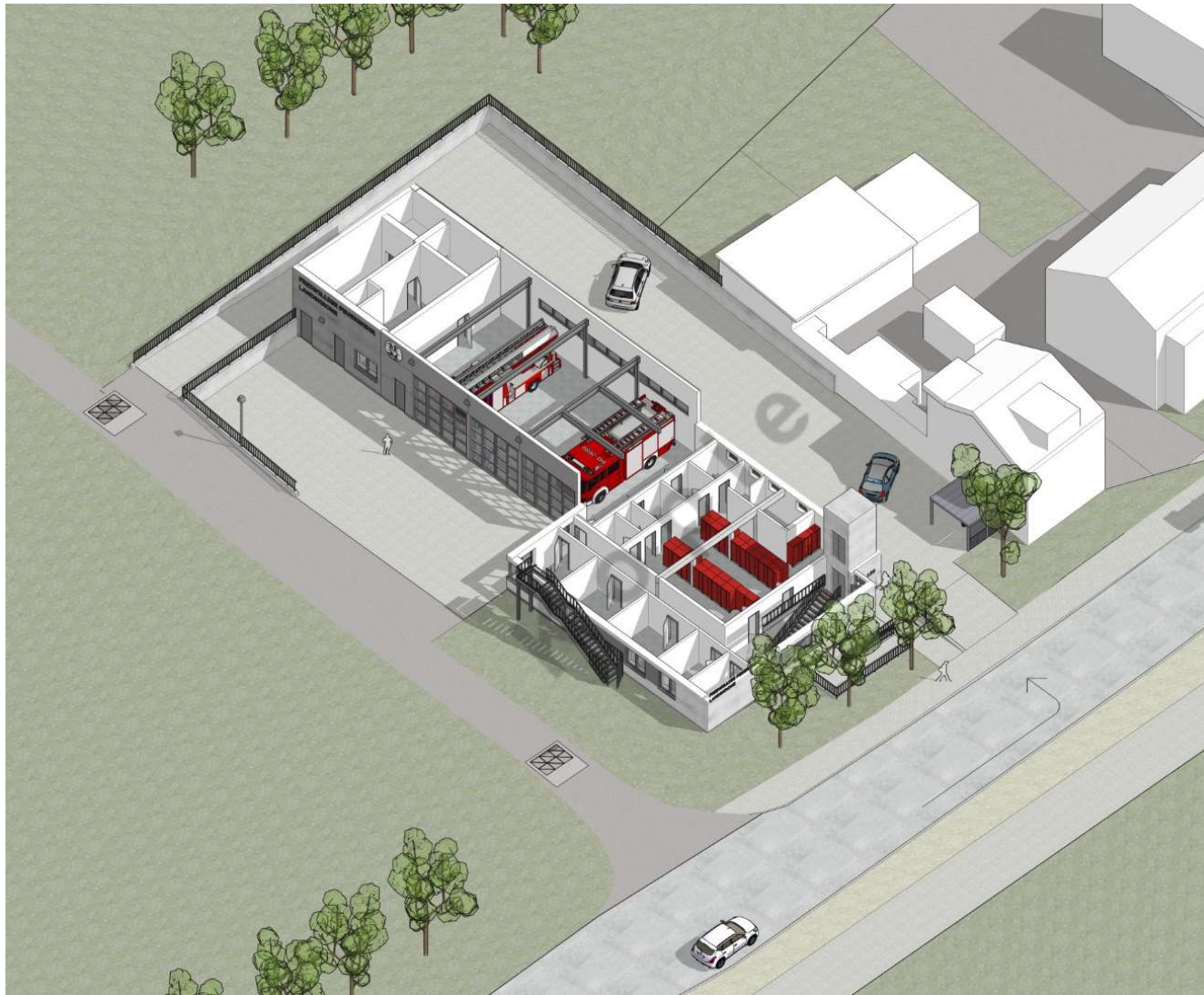
Perspektive von Osten

5. Visualisierungen



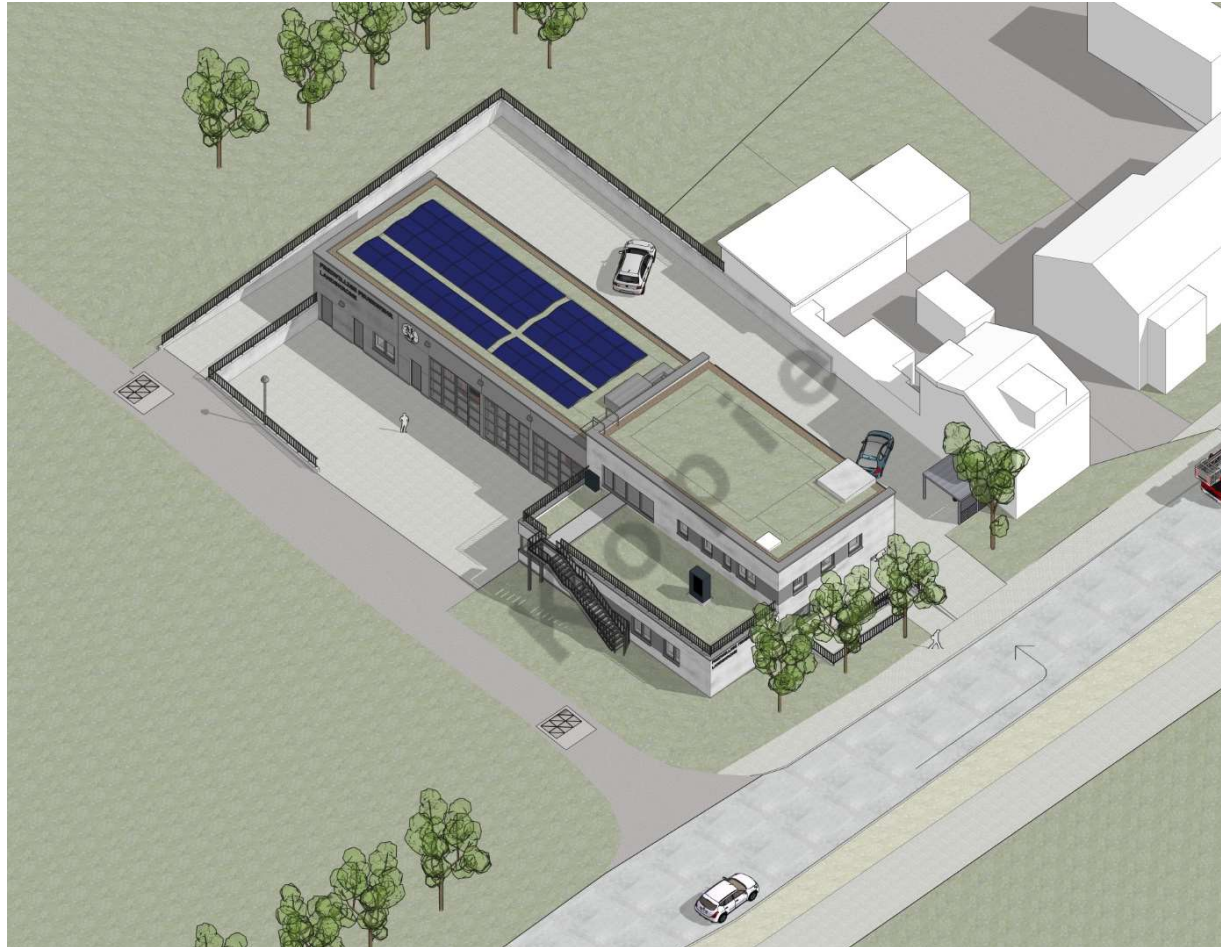
Perspektive von Nord-Westen

5. Visualisierungen



Isometrie

5. Visualisierungen



Isometrie Dachaufsicht